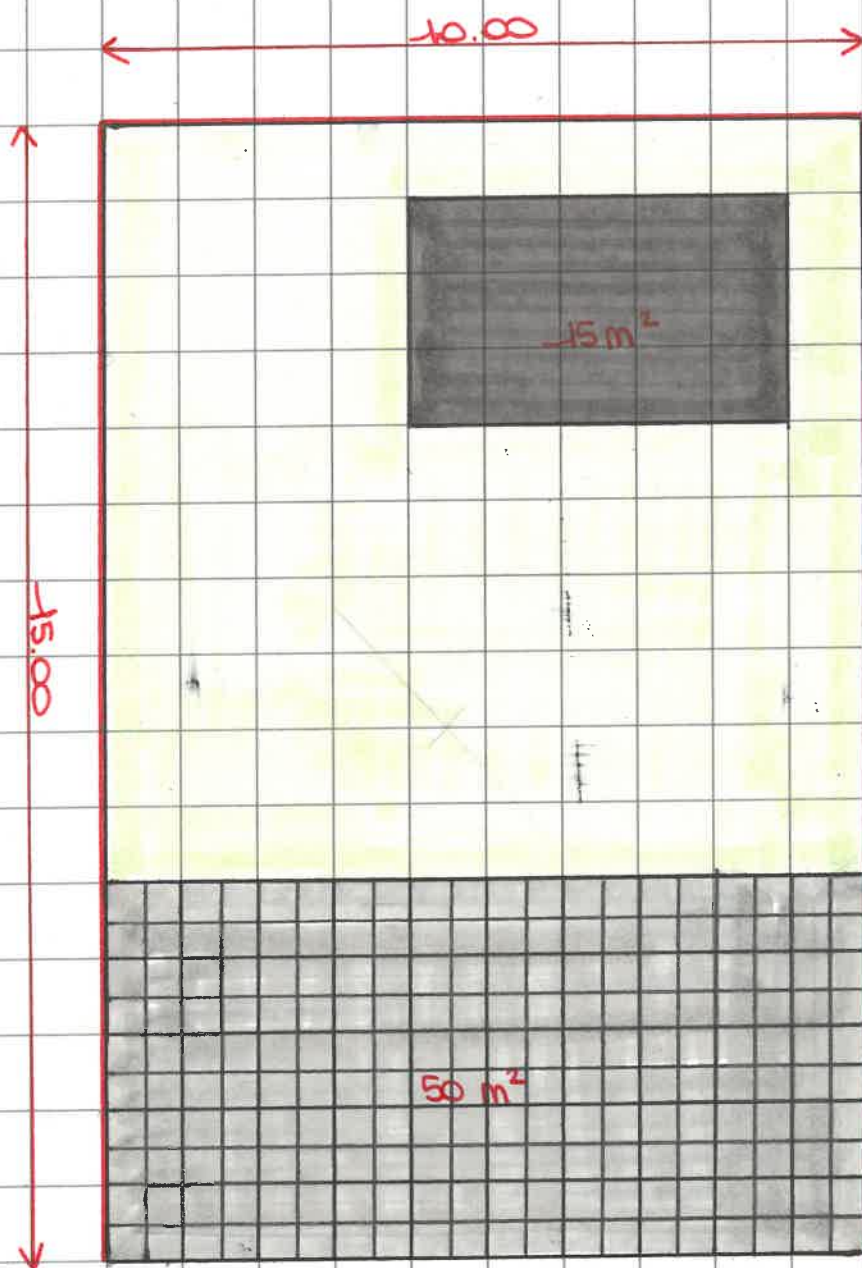


$$\text{TUINZONE} = 90 \text{ m}^2$$

$$\rightarrow \text{TERRAS} = 90 \text{ m}^2 / 3 = 30 \text{ m}^2$$

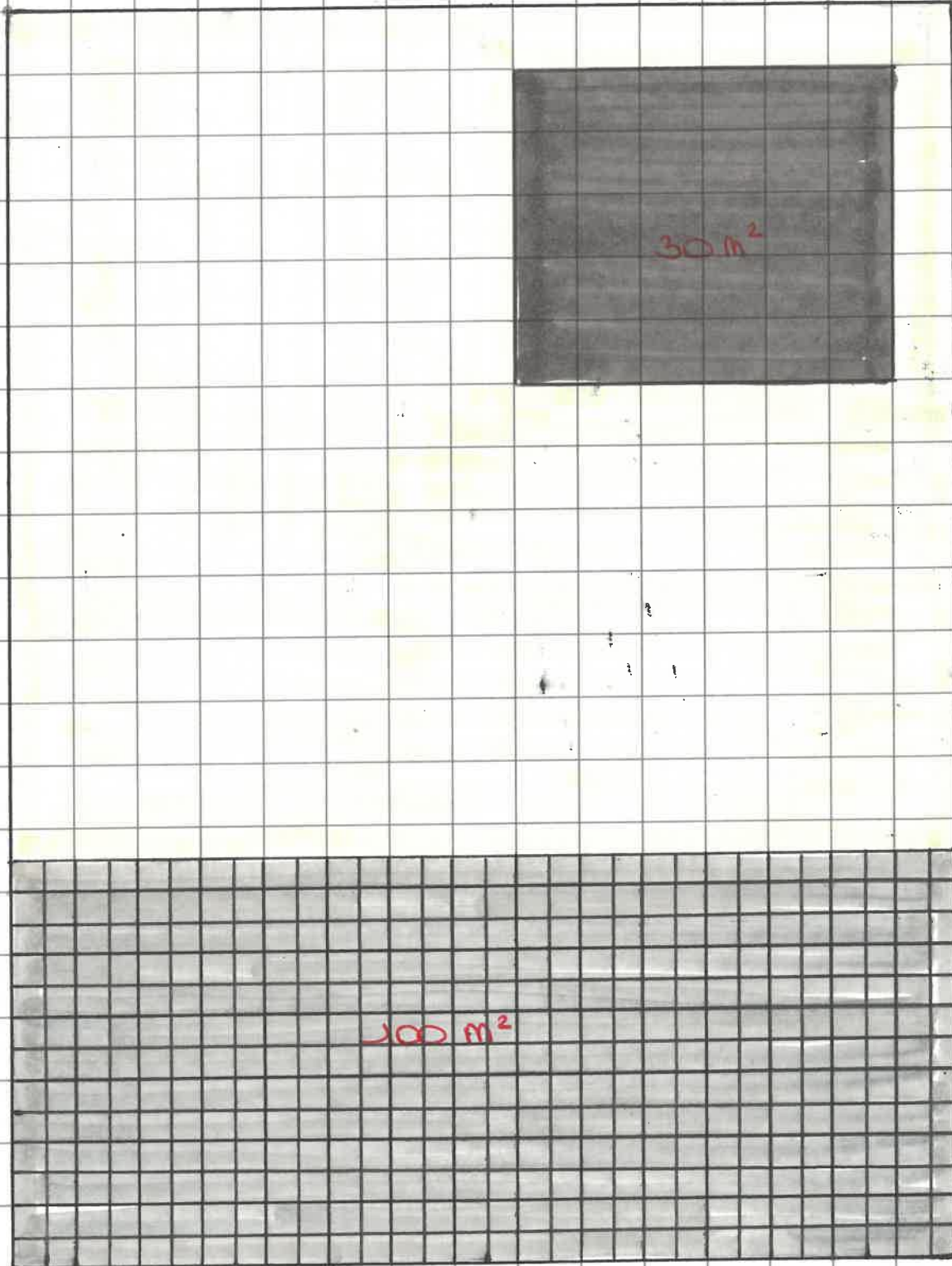
$$\rightarrow \text{CONSTRUCTIE} = 90 \text{ m}^2 \cdot 10\% = 9 \text{ m}^2$$



$$\text{TUINZONE} = 150\text{ m}^2$$

$$\text{TERRAS} = 150\text{ m}^2 / 3 = 50\text{ m}^2$$

$$\text{CONSTRUCTIE} = 150\text{ m}^2 \cdot 10\% = 15\text{ m}^2$$



$$\text{TUWZONE} = 300\text{ m}^2$$

$$\rightarrow \text{TERRAS} = 300\text{ m}^2 / 3 = 100\text{ m}^2$$

$$\rightarrow \text{CONSTRUCTIE} = 300\text{ m}^2 \cdot 10\% = 30\text{ m}^2$$